

# Site Plan


 Plot 15  
2 bedroom house

 Plot 16  
2 bedroom house



For more information contact DCH Sales Team

01752 856037 | [sales@dchgroup.com](mailto:sales@dchgroup.com) | [www.dchnewhomes.com](http://www.dchnewhomes.com)

 @DCHnews - Follow us on twitter, for all our latest news.

\*Based on a 5% deposit of a 2 bedroom semi-detached home, deposit will vary depending on lender or share purchased, please speak with an Independent Financial Advisor.

# Court Barton Thorverton



Prices start from **£94,000** for a **40%** share  
of a 2 bedroom house\*

A fantastic opportunity for local people to purchase a  
new home in the sought after village of Thorverton.

Situated within the river Exe Valley, your new home will be  
surrounded by Devon Countryside and yet Exeter is less  
than eight miles away.

This development offers you the best of both worlds.



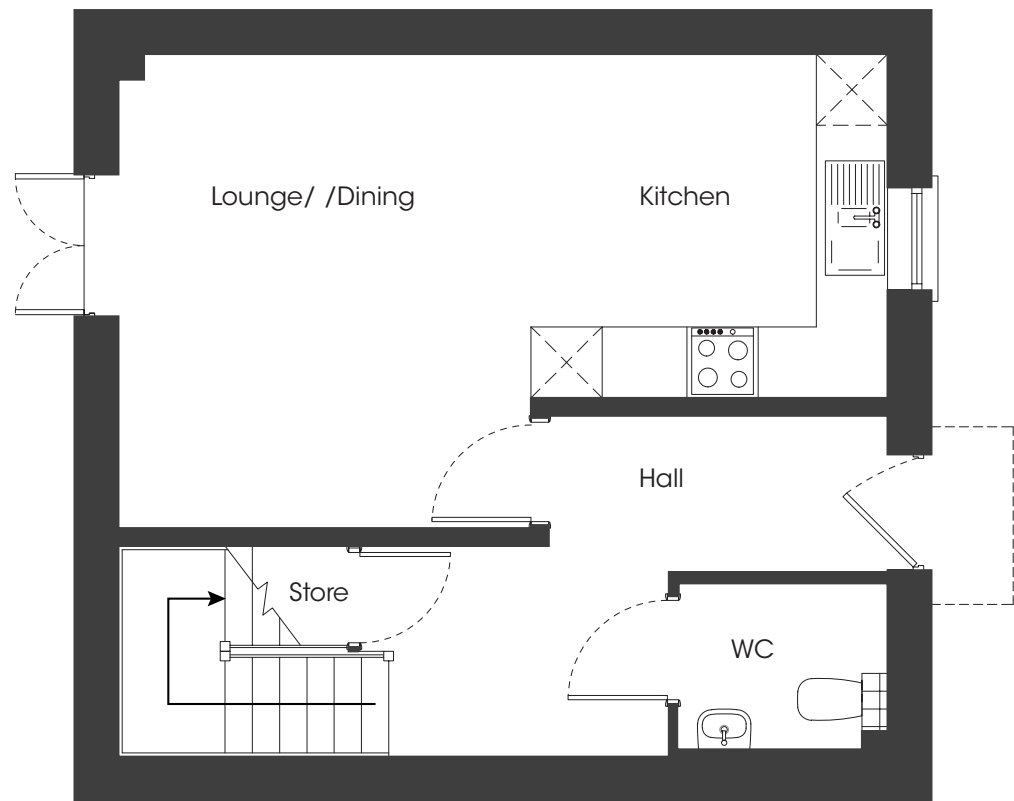
For more information contact DCH Sales Team

01752 856037 | [sales@dchgroup.com](mailto:sales@dchgroup.com) | [www.dchnewhomes.com](http://www.dchnewhomes.com)

 @DCHnews - Follow us on twitter, for all our latest news.

\*Based on a 5% deposit of a 2 bedroom semi-detached home, deposit will vary depending on lender or share purchased, please speak with an Independent Financial Advisor.

Plot 15  
2 bedroom house



Ground Floor

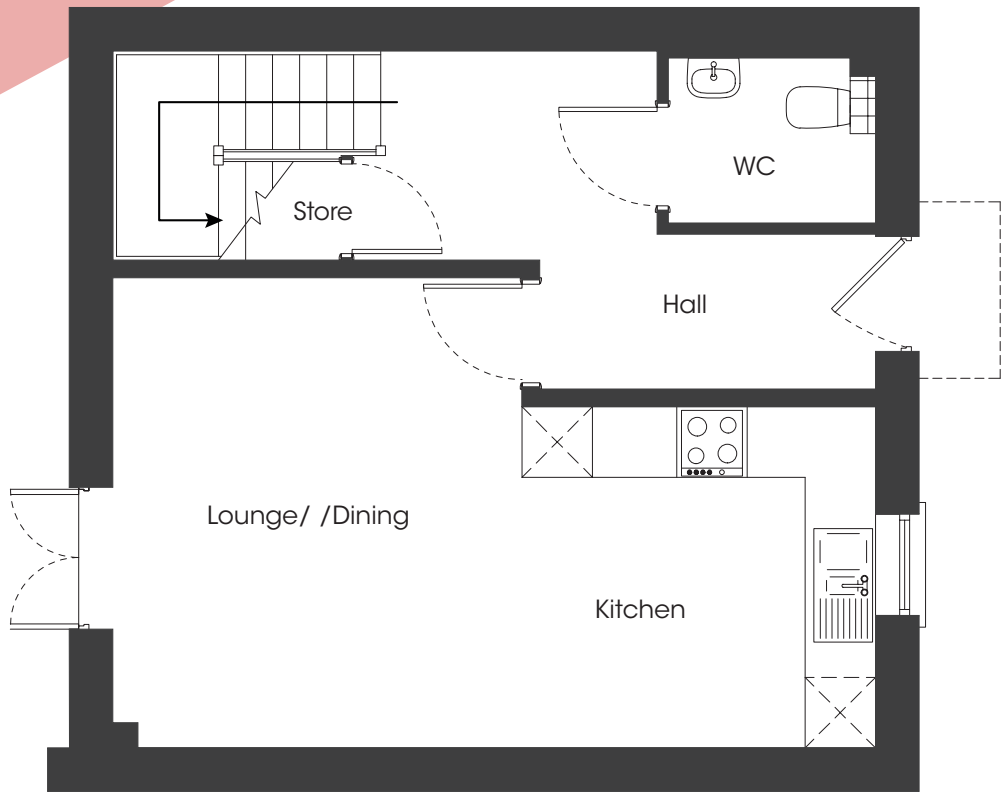


First Floor

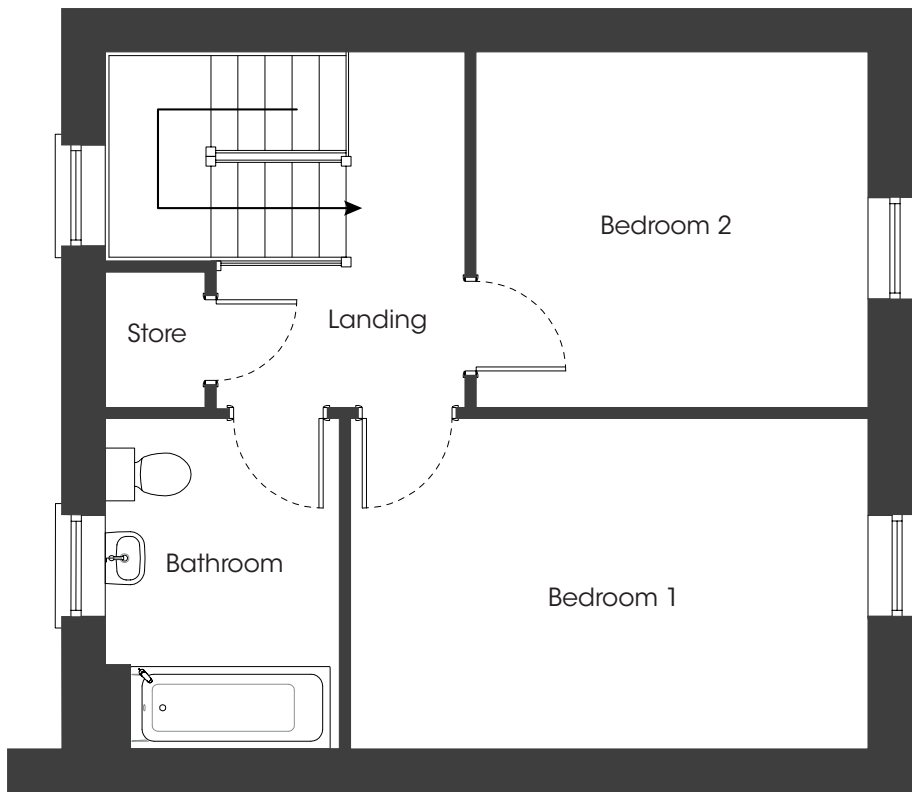
Plot	House type	Open Market Value	40% Share	Rent*
15	2 bedroom detached house with 2 parking spaces	£250,000	£100,000	£322.41

\*Including buildings insurance. Service charge to be confirmed.

Plot 16  
2 bedroom house



Ground Floor



First Floor

Plot	House type	Open Market Value	40% Share	Rent*
16	2 bedroom semi-detached house with 2 parking spaces	£235,000	£94,000	£302.43

\*Including buildings insurance. Service charge to be confirmed.

The prices are correct at the time of print but can be subject to change, speak to a Sales Consultant for further details.  
The floor plans shown are for guidance only and are subject to change during construction. Window and door positions may vary from home to home, and some homes may be left or right handed.